

# Instructions

## Vote for one in each contest

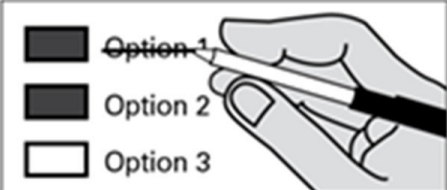


Fill in the box to the left of your choice using black or blue ink.

You may leave a contest blank, your ballot will still count.

If you vote for more than one, no votes will be counted for that contest.

## Correcting a mistake



Draw a line through the incorrect candidate name or ballot measure choice. You may then make another choice.

## Optional write-in

To vote for a candidate not listed in that contest, fill in the box to the left of the dashed line and print the name on the line.

## No stamp needed to return your ballot

### Who donates to campaigns?

View contributors for candidates and measures

### Federal Elections Commission

www.fec.gov  
Toll Free (800) 424-9530

### Public Disclosure Commission

www.pdc.wa.gov  
Toll Free (877) 601-2828

### Start Voting Here

#### READ:

Each candidate for partisan office may state a political party that he or she prefers. A candidate's preference does not imply that the candidate is nominated or endorsed by the party, or that the party approves of or associates with that candidate.

#### Federal Office

##### U.S. Representative Congressional District 1

###### Partisan Office

Suzan DelBene (Prefers Democratic Party)

Steven Skelton (Prefers Libertarian Party)

Robert Dean Mair (States No Party Preference)

Matthew Heines (States No Party Preference)

Justin Smoak (States No Party Preference)

Derek Chartrand (Prefers GOP Party)

Jeffrey Beeler, Sr. (Prefers Republican Party)

##### U.S. Representative Congressional District 2

###### Partisan Office

Timothy S. Hazelo (Prefers Republican Party)

Tim Uy (Prefers Trump Republican Party)

Kari Ilonummi (Prefers Republican Party)

Rick Larsen (Prefers Democratic Party)

James Dean Golder (Prefers Republican Party)

Carrie R. Kennedy (Prefers Republican Party)

Cody Hart (Prefers Republican Party)

Jason Call (Prefers Democratic Party)

### State Offices

#### Governor - Partisan Office

Alex Tsimerman (Prefers StandupAmerica Party)

Phil Fortunato (Prefers Republican Party)

Ryan Ryals (Prefers Unaffiliated Party)

Leon Aaron Lawson (Prefers Trump Republican Party)

Henry Clay Dennison (Prefers Socialist Workers Party)

Tim Eyman (Prefers Republican Party)

Liz Hallock (Prefers Green Party)

Goodspaceguy (Prefers Trump Republican Party)

Omari Tahir Garrett (Prefers Democrat Party)

Don L. Rivers (Prefers Democratic Party)

Martin L. 'Iceman' Wheeler (Prefers Republican Party)

Raul Garcia (Prefers Republican Party)

Tylor Grow (Prefers Republican Party)

Winston Wilkes (Prefers Propertarianist Party)

Brian R. Weed (States No Party Preference)

Thor Amundson (Prefers Independent Party)

Gene Hart (Prefers Democratic Party)

William (Bill) Miller (Prefers American Patriot Party)

Matthew Murray (Prefers Republican Party)

Dylan B. Nails (Prefers Independent Party)

Cameron M. Vessey (States No Party Preference)

David W. Blomstrom (Prefers Fifth Republic Party)

Anton Sakharov (Prefers Trump Republican Party)

Craig Campbell (States No Party Preference)

Nate Herzog (Prefers Pre2016 Republican Party)

Cregan M. Newhouse (States No Party Preference)

Ian Gonzales (Prefers Republican Party)

Cairo D'Almeida (Prefers Democratic Party)

Elaina J. Gonzalez (Prefers Independent Party)

Jay Inslee (Prefers Democratic Party)

Joshua Freed (Prefers Republican Party)

David Voltz (Prefers Cascadia Labour Party)

Joshua Wolf (Prefers New-Liberty Party)

Loren Culp (Prefers Republican Party)

Richard L. Carpenter (Prefers Republican Party)

Bill Hirt (Prefers Republican Party)

#### Lt. Governor

###### Partisan Office

Joseph Brumbles (Prefers Republican Party)

Jared Frerichs (Prefers Libertarian Party)

Ann Davison Sattler (Prefers Republican Party)

James R. Rafferty (Prefers Democratic Party)

Marko Lias (Prefers Democratic Party)

Matt Seymour (Prefers Libertarian Party)

Michelle Jasmer (Prefers Democratic Party)

Bill Penor (Prefers Republican Party)

Richard (Dick) Muri (Prefers Republican Party)

Denny Heck (Prefers Democratic Party)

Marty McClendon (Prefers Republican Party)

Next Page

**State Offices**

**Secretary of State**

Partisan Office

Ed Minger  
(Prefers Independent Party)

Gentry Lange  
(Prefers Progressive Party)

Kim Wyman  
(Prefers Republican Party)

Gael Tarleton  
(Prefers Democratic Party)

---

**State Treasurer**

Partisan Office

Duane A. Davidson  
(Prefers Republican Party)

Mike Pellicciotti  
(Prefers Democratic Party)

---

**State Auditor**

Partisan Office

Joshua Casey  
(Prefers Democratic Party)

Chris Leyba  
(Prefers Republican Party)

Pat (Patrice) McCarthy  
(Prefers Democratic Party)

---

**Attorney General**

Partisan Office

Matt Larkin  
(Prefers Republican Party)

Mike Vaska  
(Prefers GOP Party)

Brett Rogers  
(Prefers Republican Party)

Bob Ferguson  
(Prefers Democratic Party)

**Commissioner of Public Lands**

Partisan Office

Cameron Whitney  
(Prefers Republican Party)

Steve Sharon  
(Prefers Republican Party)

Hilary Franz  
(Prefers Democratic Party)

Kelsey Reyes  
(Prefers Libertarian Party)

Maryam Abasbarzy  
(Prefers Republican Party)

Sue Kuehl Pederson  
(Prefers Republican Party)

Frank Wallbrown  
(Prefers Democratic Party)

**Superintendent of Public Instruction**

Nonpartisan Office

Ron Higgins

Maia Espinoza

Stan Lippmann

David Spring

Dennis Wick

Chris Reykdal

**Insurance Commissioner**

Partisan Office

Anthony Welti  
(Prefers Libertarian Party)

Chirayu Avinash Patel  
(Prefers Republican Party)

Mike Kreidler  
(Prefers Democratic Party)

**Legislative District 10**

**State Senator**

Partisan Office, short/full term

Ron Muzzall  
(Prefers Republican Party)

Helen Price Johnson  
(Prefers Democratic Party)

**State Representative Position 1**

Partisan Office

Ivan Lewis  
(Prefers Democratic Party)

Angie Homola  
(Prefers Democratic Party)

Greg Gilday  
(Prefers GOP Party)

Scott McMullen  
(Prefers Democratic Party)

Suzanne Woodard  
(Prefers Democratic Party)

**State Representative Position 2**

Partisan Office

Taylor Zimmermann  
(Prefers Progressive Party)

Dave Paul  
(Prefers Democratic Party)

Bill Bruch  
(Prefers Republican Party)

**Legislative District 39**

**State Senator**

Partisan Office

Kathryn A. Lewandowsky  
(Prefers WA Progressive Party)

Keith L. Wagoner  
(Prefers Republican Party)

**State Representative Position 1**

Partisan Office

Robert J. Sutherland  
(Prefers Republican Party)

Claus Joens  
(Prefers Democratic Party)

**State Representative Position 2**

Partisan Office

Sandy Mesenbrink  
(Prefers Republican Party)

Ryan Johnson  
(Prefers Democratic Party)

Carolyn Eslick  
(Prefers Republican Party)

**Legislative District 40**

**State Senator**

Partisan Office

Charles Carrell  
(Prefers Republican Party)

Elizabeth (Liz) Lovelett  
(Prefers Democratic Party)

**State Representative Position 1**

Partisan Office

Debra Lekanoff  
(Prefers Democratic Party)

**State Representative Position 2**

Partisan Office, short/full term

Alex Ramel  
(Prefers Democratic Party)

Russ Dzialo  
(Prefers Republican Party)

**County Offices**

**County Commissioner District 1**

Partisan Office

Johnny Archibald  
(States No Party Preference)

Ron Wesen  
(Prefers GOP Party)

Mark Lundsten  
(Prefers Democratic Party)

**County Commissioner District 2**

Partisan Office

Mary Hudson  
(Prefers Democratic Party)

Peter Browning  
(States No Party Preference)

Kenneth A Dahlstedt  
(Prefers Democrat Party)

**Judge Position 3**

Nonpartisan Office

Tom Seguine

Heather D. Shand Perkins

Elizabeth Yost Neidzwski

Next Page

16847 v1

**Public Utility District No. 1**

**Commissioner Position 1**

- Nonpartisan Office
- Wim Houppermans
  - Bryce Nickel
  - Andrew Miller
  - Kenneth Goodwin
  - Rick Pitt
  -

**Precinct Committee Officer (PCO)**  
**For this office only: In order to vote for precinct committee officer, a partisan office, you must affirm that you are Democrat or Republican and may vote only for one candidate from the party you select. Your vote for a candidate affirms your affiliation with the same party as the candidate. This preference is private and will not be matched to your name or shared.**

**Precinct 111  
Democratic Party Candidates**

- Micheal Bauter  
I affirm I am a Democrat
- Haley McNealey  
I affirm I am a Democrat

**Precinct 207  
Democratic Party Candidates**

- Wim Houppermans  
I affirm I am a Democrat
- Michael Lytton  
I affirm I am a Democrat

**Precinct 217  
Democratic Party Candidates**

- Bryce Nickel  
I affirm I am a Democrat
- Robert J. Doll  
I affirm I am a Democrat

**Precinct 302  
Democratic Party Candidates**

- Chuck Jerman  
I affirm I am a Democrat
- Jamal K Rabieh  
I affirm I am a Democrat

**Precinct 305  
Democratic Party Candidates**

- Lorena Perez  
I affirm I am a Democrat
- David Waterman  
I affirm I am a Democrat

**Local Measure**

**Darrington School District No. 330**

**Proposition No. 1  
Supplemental Educational Programs and Operation Levy**

The Board of Directors of Darrington School District No. 330 adopted Resolution No. 395-04-20, concerning supplemental funding for educational programs and operation. This proposition would authorize the District to supplement, in response to recent legislative changes, the remaining two years of the levy approved at the April 2018 special election, by levying the following excess taxes on all taxable property within the District, for support of educational programs and operation expenses not funded by the State:

Collection Year	Estimated Levy Rate/\$1,000 Assessed Value	Supplemental Levy Amount
2021	\$1.09	\$510,000
2022	\$1.09	\$510,000

all as provided in Resolution No. 395-04-20.

Should this proposition be approved?

- Levy Yes
- Levy No

**End of Ballot**



Sample Ballot

**This page intentionally left blank**